



60 Ryegate Road, Tapton, Sheffield, S10 5FB



60 Ryegate Road

Tapton

Guide Price

£240,000

Guide Price £240,000 to £250,000

Fabulous Ground Floor 2-Bedroom Apartment in Sought-After Crosspool

Welcome to this beautifully presented, bright, and spacious two-bedroom ground floor apartment, perfectly positioned in the highly desirable area of Crosspool. This modern home offers an ideal blend of style, comfort, and convenience, making it perfect for first-time buyers, downsizers, or investors alike.

Upon entering, you're greeted by a generous hallway that leads through to a light-filled living room with ample space for relaxing and entertaining. The contemporary kitchen is well-appointed, offering excellent storage and workspace, ideal for those who love to cook.

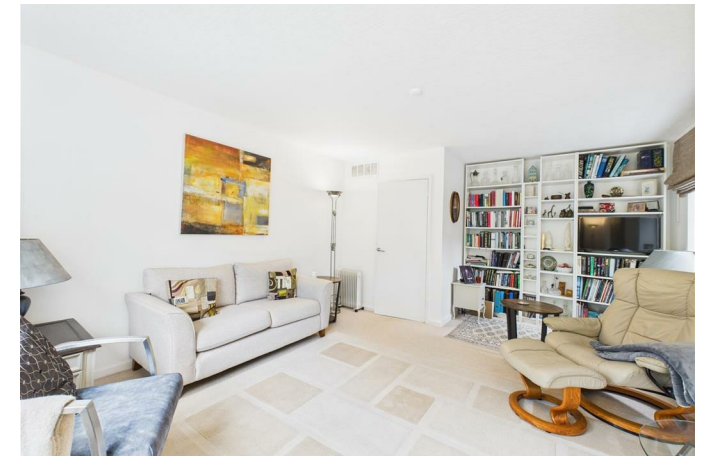
The apartment features two well-proportioned bedrooms, including a large double and a second room that's perfect as a guest room, nursery, or home office. The stylish bathroom is finished to a high standard, completing this attractive home.

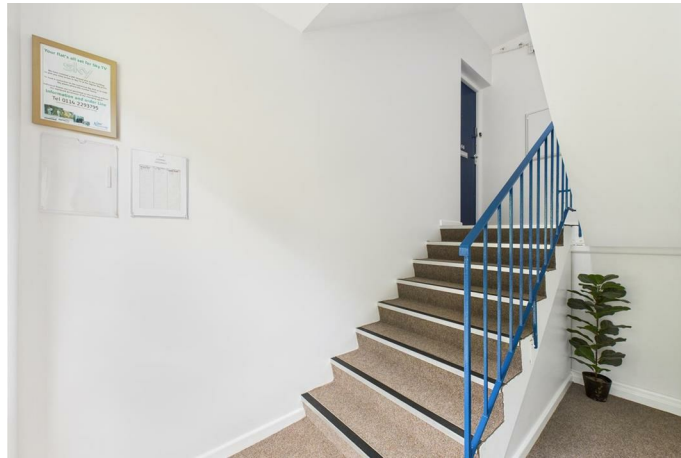
Further benefits include all-electric heating, double glazing throughout, and an allocated parking space. The property is close to a wide range of local amenities and enjoys excellent transport links, with easy access to Sheffield's universities and hospitals. It also sits on the edge of the stunning Peak District, offering a balance of urban convenience and natural beauty.

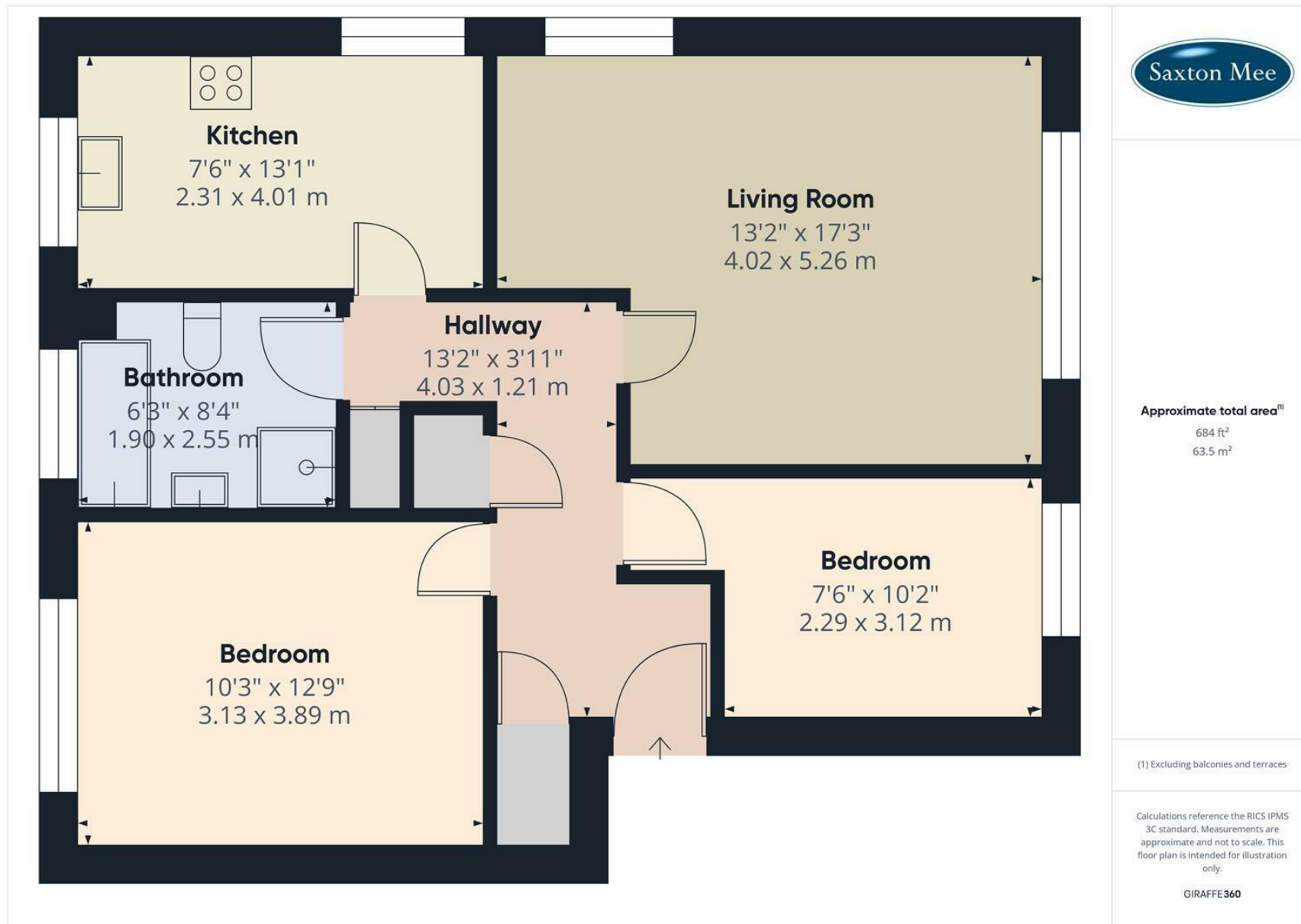
With its fresh, modern interior and prime location, this apartment is not to be missed. Early viewing is highly recommended.



- Guide Price: £240,000–£250,000
- Bright and spacious GROUND FLOOR 2-bedroom apartment
- Located in the highly sought-after area of Crosspool
- Beautifully presented with a modern and stylish interior throughout
- Generous living room and well-appointed contemporary kitchen
- Two well-proportioned bedrooms and a high-quality bathroom
- Allocated Parking space and a shed suitable for storage
- Close to local amenities, excellent transport links and easy access to Sheffield universities, hospitals, and the Peak District
- Electric heating throughout
- Call Saxton Mee Banner Cross to book a viewing







While we endeavour to make our sales particulars fair, accurate and reliable, they are only a general guide to the property and, accordingly, if there is any point, which is of particular importance to you, please contact the relevant office. The Agents have not tested any apparatus, equipment, fittings or services and so cannot verify they are in working order. The buyer is advised to obtain verification. Please note all the measurement details are approximate and should not be relied upon as exact. All plans, floor plans and maps are for guidance purposes only and are not to scale. Under no circumstances should they be relied upon as exact or for use in planning carpets and other such fixtures, fittings or furnishings. YOUR HOME IS AT RISK IF YOU DO NOT KEEP UP REPAYMENTS ON A MORTGAGE OR OTHER LOAN SECURED ON IT. 'A Life Assurance policy may be requested.' 'Written Quotations of credit terms available on request.'

Banner Cross
T: 0114 268 3241
E: bannercross@saxtonmee.co.uk
www.saxtonmee.co.uk

Hathersage
T: 01433 650009
E: hathersage@saxtonmee.co.uk

Bakewell
T: 01629 815307
E: bakewell@saxtonmee.co.uk

Matlock
T: 01629 828250
E: matlock@saxtonmee.co.uk

